

Bradley Drive, Hailsham



- Mansion Style Apartment
- Georgian Influenced
- Allocated Parking
- Roebuck Park Country Walks
- Turn Key Home
- Dual Aspect Lounge
- Gas Central Heating
- Long Lease
- Two Double Bedrooms
- En- Suite



Leasehold

£200,000

Offers in excess of

2 BEDROOM

1 RECEPTION

2 BATHROOM

0 GARAGE

Bradley Drive, Hailsham

Bradley Drive, Hailsham

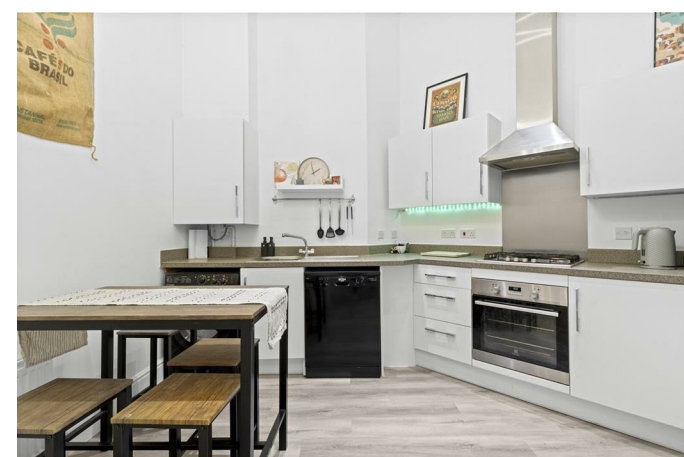
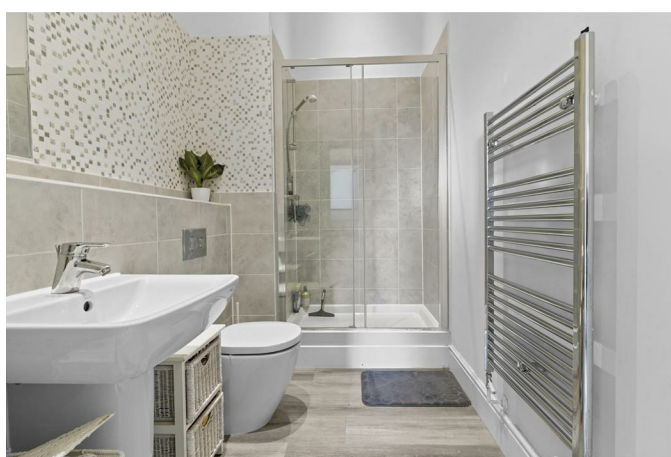
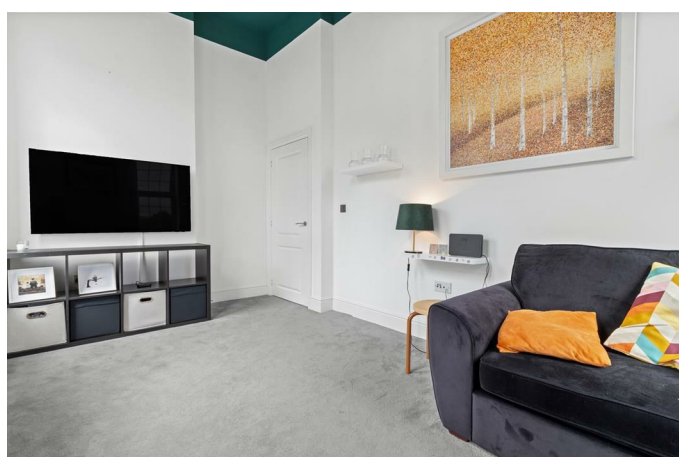
DESCRIPTION

3D Virtual Tour | Two Bathrooms | Modern Kitchen Diner | Gas Central Heating | Long Lease | Allocated Parking | Country Walks | Dual Aspect Lounge | Georgian Inspired | Viewing Essential

Situated within the popular village of Hellingly, this well-presented home on Bradley Drive offers practical and well-proportioned accommodation ideally suited to first-time buyers, investors or those looking to downsize. Conveniently located close to schools and transport links, the property provides comfortable living in a sought-after residential setting.

The accommodation comprises a bright and welcoming lounge, a fitted kitchen with ample storage and workspace, and thoughtfully arranged living accommodation throughout. Upstairs, the property benefits from well-proportioned bedrooms alongside a family bathroom, all presented in good decorative order.

Further benefits include double glazing and an attractive position within the development, with easy access to nearby countryside walks, Hailsham town centre and surrounding villages. Offering low-maintenance living in a convenient location, early viewing is highly recommended.



Bradley Drive, Hailsham

Hallway 5.7 x 1.11 (18'8" x 3'7")

Kitchen 4.09 x 3.15 (13'5" x 10'4")

Shower Room 1.71 x 2.77 (5'7" x 9'1")

Bedroom One 2.62 x 3.89 (8'7" x 12'9")

En-Suite 2.05 x 1.43 (6'8" x 4'8")

Bedroom Two 3.75 x 2.74 (12'3" x 8'11")

Lounge 2.71 x 5.15 (8'10" x 16'10")

